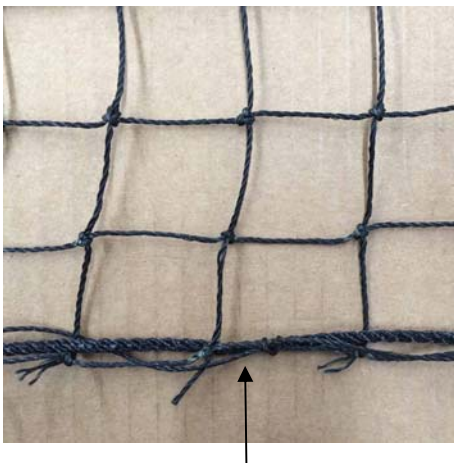
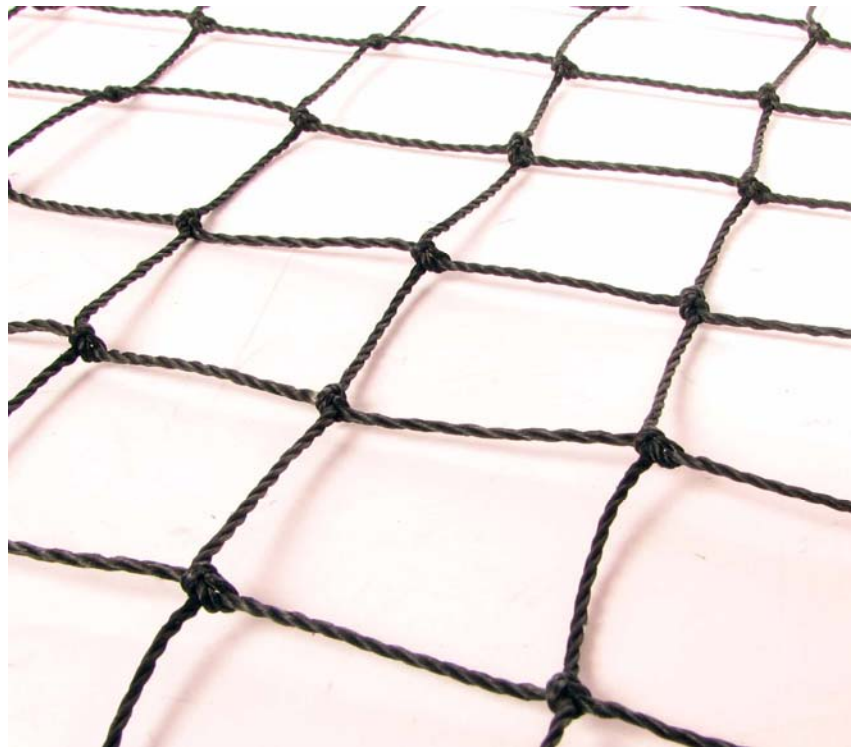


Spectator protective netting, approved for NHL arenas.

Installation

To meet NHL strength requirements, the netting must only be attached to the perimeter rope (polyester rope laced to the perimeter of the net), and not directly to the Kevlar® netting mesh. Connections made directly to the Kevlar® yarn in the body of the net are not an acceptable method of anchorage.



Attach here only

SPECIFICATIONS

- Knotted Kevlar® netting (1.2 mm diameter)
- Color : Black
- Square mesh size : 36 mm (1.4 in)
- Border : 4mm twisted polyester rope
- Weight : 81 sq. ft. / lb
- Flame retardant – NFPA 701 compliant

Barry Cordage Ltd.

6110 boul. des Grandes Prairies
Montreal QC H1P 1A2 Canada
☎ 514.328.3888 📠 514.328.1963
1.800.305.2673 (Canada / USA)