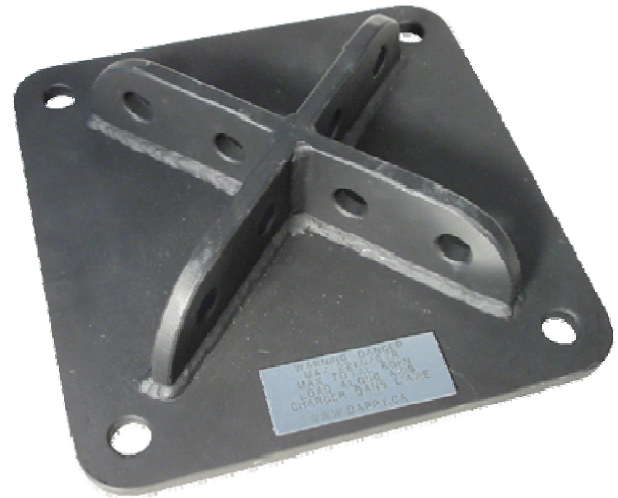


PAC001 X Anchor Plate



Black multipurpose steel anchoring plate. May be used for different types of anchoring.



SPECIFICATIONS

- Work load of 22.2 kN (5000 lbf) per quarter
- Maximal total work load of 65 kN (15000 lbf)
- Engineer certified
- Important: Installation must be done and certified by competent persons

Barry Cordage Ltd.

6110 boul. des Grandes Prairies
Montreal QC H1P 1A2 Canada
☎ 514.328.3888 📠 514.328.1963
1.800.305.2673 (Canada / USA)